

UL 1008 Listed TripleSwitch™ for Load Bank Testing

ESL's TripleSwitch™ is a 3-way manual transfer switch designed to service critical operations facilities that have a dedicated permanent generator. Typical facilities are:

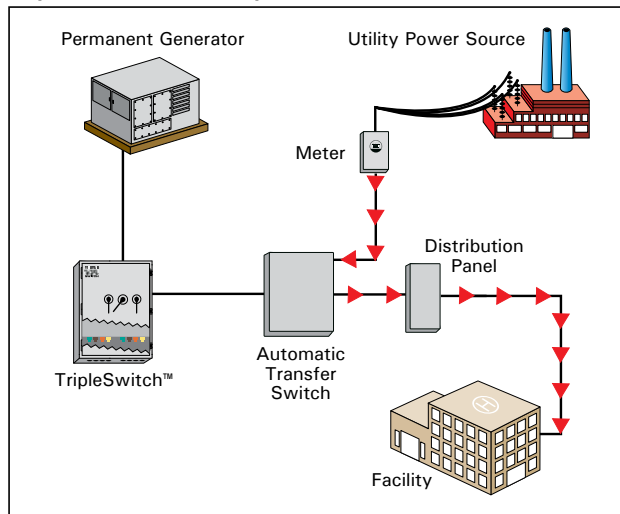
- Wastewater Lift Stations
- Data Centers
- Telecom Distribution Sites
- Healthcare & Hospital Facilities
- Emergency Operations Centers

Load Bank testing procedures with temporary load bank connections can be a difficult process and leave critical operations systems (COPS) susceptible to power loss while testing.

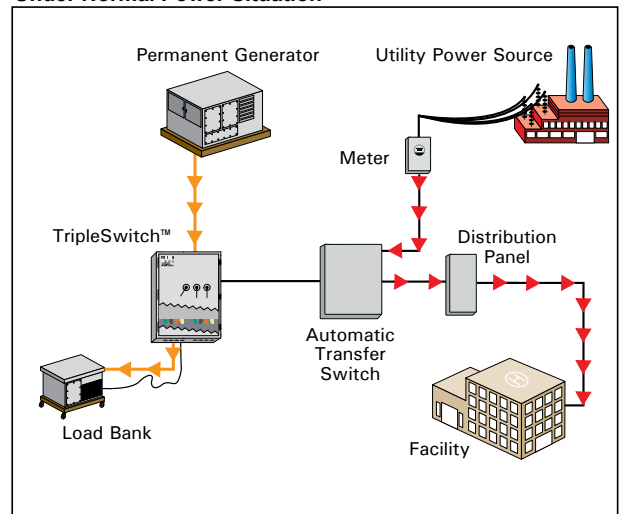
The TripleSwitch™ provides three interlocked circuit breakers to prevent backfeeding the utility grid and quick-connect cam-style connectors for both portable load bank testing and a portable generator.



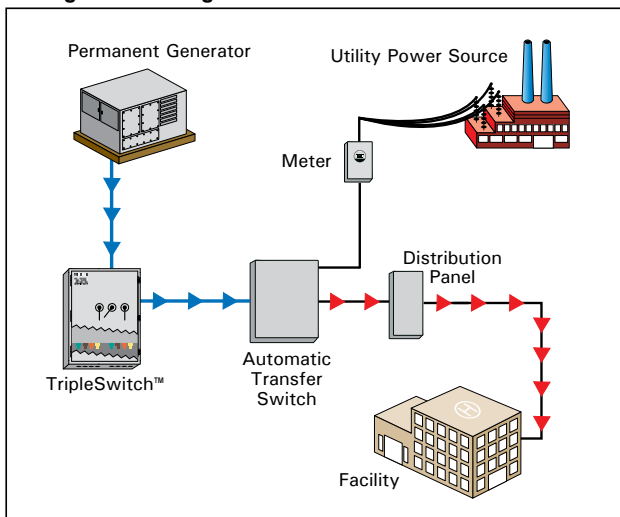
TripleSwitch™ Normal Operation



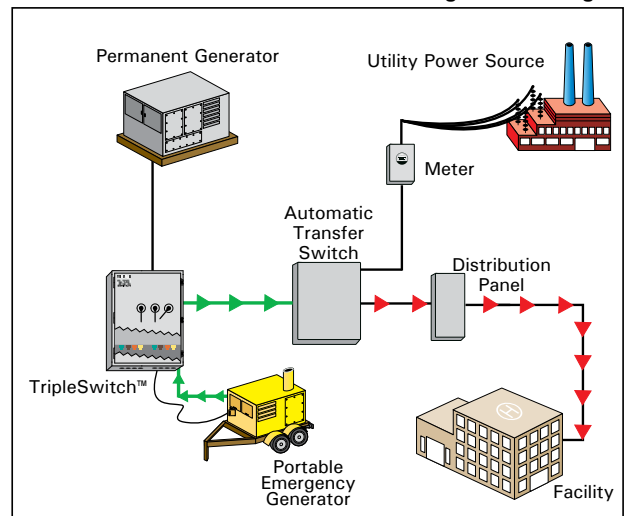
Load Bank Testing Using TripleSwitch™ Under Normal Power Situation



Permanent Generator Running During Power Outage



Portable Generator On Permanent Generator Out of Service During Power Outage



ESL Power Systems, Inc.

2800 Palisades Drive • Corona, CA 92880-9427

Tel: (951) 739-7020 • (800) 922-4188 • Fax: (951) 739-7048

www.eslpwr.com • e-mail: info@eslpwr.com